

# A-41 and AB-40 Pressure Reducing Boiler Feed Valves

## DESCRIPTION

The Cash Acme Boiler Feed Valves are feature-packed pressure reducing feeder valves for modern hot water space heating boilers.

The **AB-40 Valves** automatically keep the system filled with water at the desired reduced operating pressure: ordinarily 14 psi in one, two or three story homes.

The advanced design of the **AB-40** offers a tri-purpose inbuilt by-pass for rapid filling of the boiler, high pressure system testing and simplified purging of the system. The "Combo-Connection" union inlet provides convenience to the installer by permitting either threaded or sweat copper connection with the same union tailpiece.

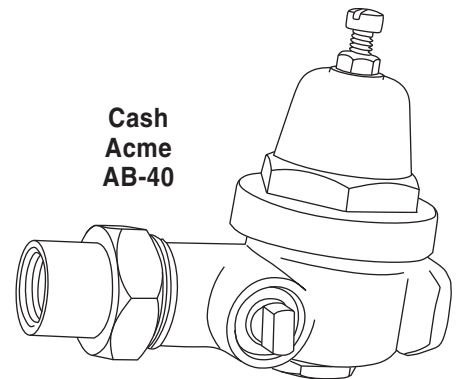
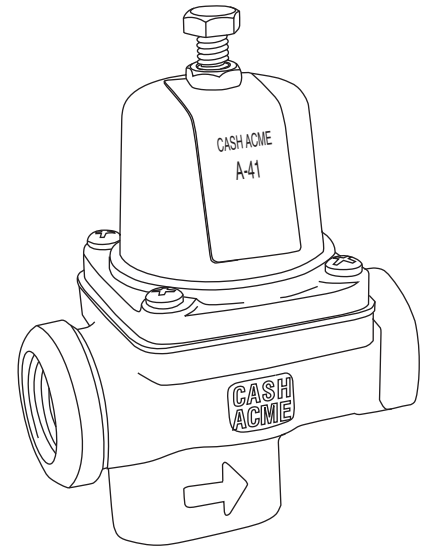
The **Cash Acme AB-40 Pressure Reducing Boiler Feed Valve** contains an inbuilt check valve in the supply inlet, which provides a positive means of preventing backflow of contaminated boiler water in the home water supply. This can occur if the supply pressure falls below the valve setting and constitutes a health hazard. Possible damage to the boiler, resulting from backflow drainage is also avoided.

The **AB-40 Boiler Feed Valve** features an all brass body, inbuilt strainer, special heat resistant diaphragm and seat disc. Check valve is built in. The **AB-40** is available in 1/2" size only.

The **Cash Acme 3/4" A-41 Boiler Feed Valve** is a pressure reducing valve designed for larger boilers requiring increased capacity.

The **Cash Acme A-41 Boiler Feed Valve** automatically reduces incoming water pressure to 14 psi and maintains the pressure in the boiler.

The **Cash Acme A-41 Boiler Feed Valve** features an iron body, inbuilt strainer, special heat resistant diaphragm and seat disc. The **A-41** is available in 3/4" female threaded connections only.



## FEATURES AND BENEFITS

Economical and easy to install:  
*Saves money and time!*

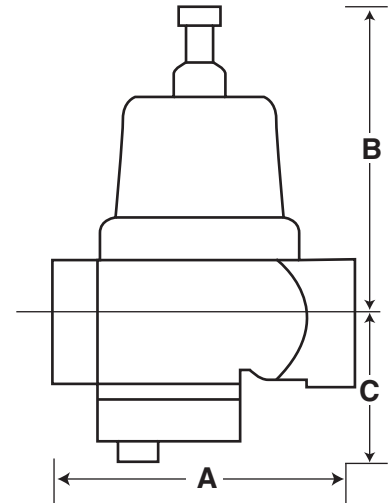
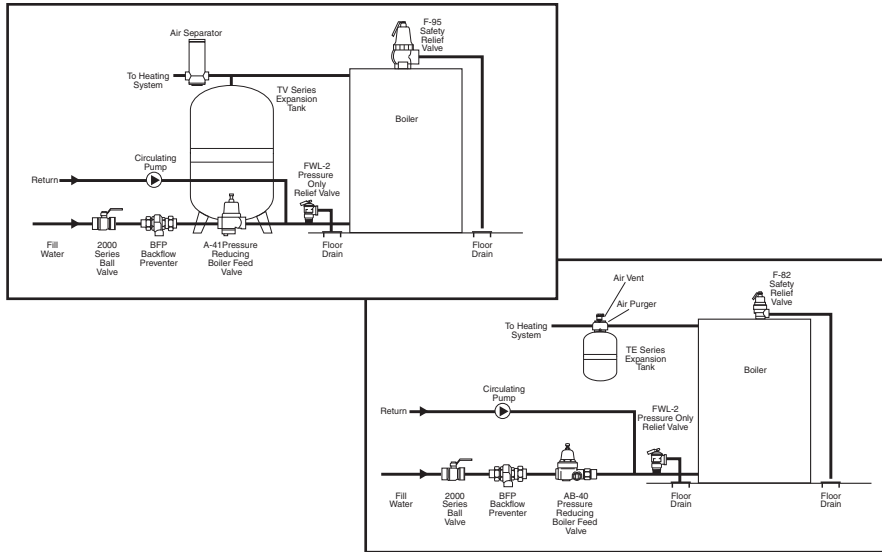
Every valve is tested for performance prior to shipping:  
*Specify and install with confidence!*

Advanced design:  
*Tri-purpose inbuilt by-pass for rapid filling of the boiler.*

"Combo-Connection" union inlet:  
*Provides convenience to the installer by permitting threaded or sweat copper connection with the same union tailpiece.*

# A-41 and AB-40 Pressure Reducing Boiler Feed Valves

## TYPICAL INSTALLATION



A-41

Dimensions	A	B	C
3/4" Threaded	3-13/16"	4-1/16"	1-17/32"

## SPECIFICATION DATA

### A-41 Performance:

Outlet Pressure Range . . . . . 0-20 psi (factory set 14 psi)  
 Maximum inlet pressure . . . . . 200 psi  
 Service . . . . . Water

### A-41 Materials:

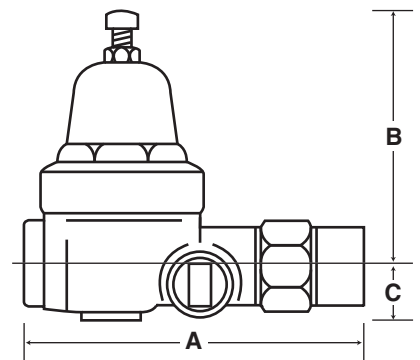
Body . . . . . Iron  
 Strainer . . . . . Stainless steel  
 Seat . . . . . Brass and Stainless steel  
 Seat Disc . . . . . EP  
 Diaphragm . . . . . EP and Nylon

### AB-40 Performance:

Outlet Pressure Range . . . . . 2-30 psi (factory set 14 psi)  
 Maximum Inlet Pressure . . . . . 200 psi  
 Service . . . . . Cold water

### AB-40 Materials:

Body . . . . . Brass  
 Strainer . . . . . Brass  
 Seat . . . . . Brass  
 Seat Disc . . . . . Buna-N  
 Diaphragm . . . . . Buna-N



AB-40

Dimensions	A	B	C
1/2" Threaded	4-3/4"	3-5/8"	7/8"

## CONNECTIONS

Threaded (NPT) A-41 . . . . . 3/4" Female threaded  
 Threaded (NPT) AB-40 . . . . . 1/2" Female threaded